

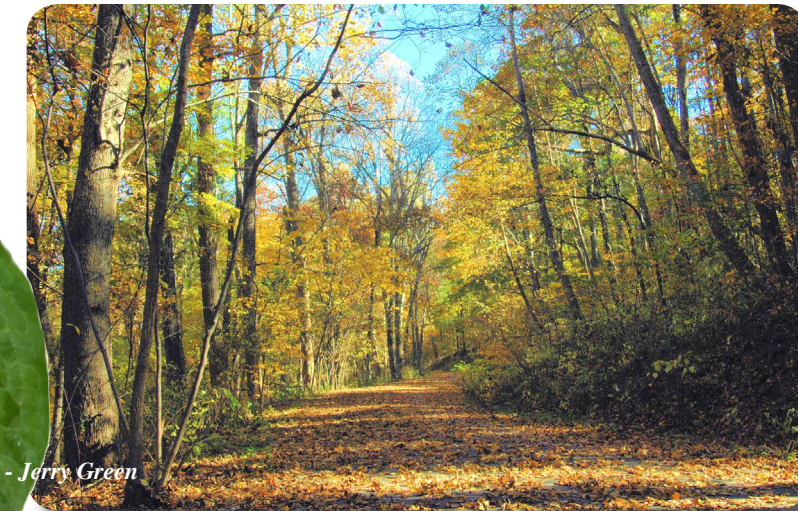
The Land Trust of Huntsville & North Alabama, Alabama's oldest land trust, is a member-supported non-profit organization dedicated to protecting North Alabama forests and farms, scenic and historic landscapes, wetlands and wildlife habitat for future generations. By being good land stewards, we work to help improve development planning and minimize sprawl. We work to protect North Alabama's natural areas - before they disappear forever.

### Why Our Work is Important

Our beautiful North Alabama vistas of forested mountains, rural farms and scenic rivers are disappearing rapidly as our communities grow.

The Land Trust is the only local land trust working across our region to protect these precious natural assets, balancing community growth with permanent protection of important lands.

*You can help save these special places by becoming a member of The Land Trust.*



- Jerry Green

### Why We Need Your Help

Your support is vital to the future protection of North Alabama's most treasured lands.

The Land Trust is a leader in permanent land protection for our ten-county region. We work with landowners, families, governments, public and private agencies, businesses, and communities. Your membership allows The Land Trust to:

- \* Provide recreation opportunities via public nature trails.
- \* Offer environmental education.
- \* Raise awareness about the importance of protecting greenspace.
- \* Enhance the quality of life in our community.
- \* Preserve our rural heritage.
- \* Maintain and improve our water and air quality.



- Dennis Keim

Our future success depends on the strength of membership support. Land Trust members receive:

- \* Invitations to "Members Only" and Special Events
- \* Newsletters and the Annual Report
- \* Discounts at local merchants

Your gift will help protect our natural treasures so that you and future generations may enjoy pristine woodlands, expanses of wildflowers, and the amazing array of animals and birds who depend upon open spaces for survival.

**Together,**  
preserving the places  
you love.

Yes, I would like to become a member!

- \$5,000 Mountaineer     \$100 Pathfinder  
 \$1,000 Forester         \$50 Trail Blazer  
 \$500 Conservationist    \$35 Hiker  
 \$250 Land Steward

I would like more information about:

- Landowner Conservation Options  
 Including The Land Trust in my will or other estate planning  
 Volunteer Opportunities

Name \_\_\_\_\_

Address \_\_\_\_\_

Phone \_\_\_\_\_

E-mail \_\_\_\_\_

Check made payable to The Land Trust

Visa     Mastercard     Discover

Card # \_\_\_\_\_

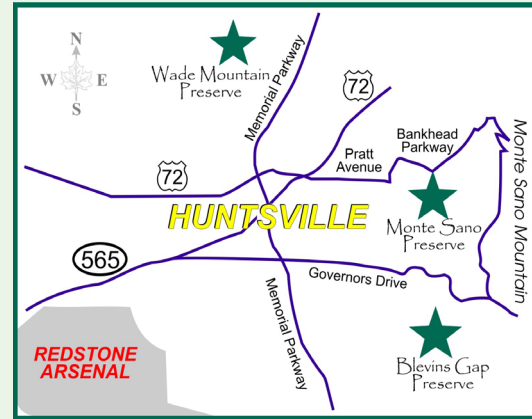
Expires on \_\_\_\_\_

Signature \_\_\_\_\_

The Land Trust  
 P. O. Box 2582  
 Huntsville, Alabama 35804  
 (256) 534-5263    www.landtrust-hsv.org

*“Heaven is under our feet  
as well as above our heads.”*

*- Henry David Thoreau*



*Volunteers have created and maintain  
33+ miles of beautiful trails  
on three nature preserves (2,884 acres).  
Hiking and biking are allowed on all three  
preserves, with horseback riding allowed  
on Wade Mountain Preserve only.*

Trails are open dawn to dusk.  
Please, no motorized vehicles, camping,  
hunting, fires, rappelling or plant removal.  
Pets must be on leads.



  
**The Land Trust**  
of Huntsville & North Alabama

*Saving nature's  
special places  
in North Alabama*

  
**The Land Trust**  
of Huntsville & North Alabama

(256) 534-5263  
[www.landtrust-hsv.org](http://www.landtrust-hsv.org)

*- Dennis Keim*